

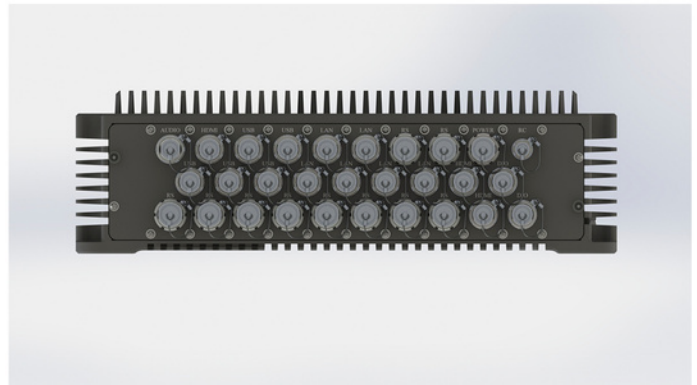
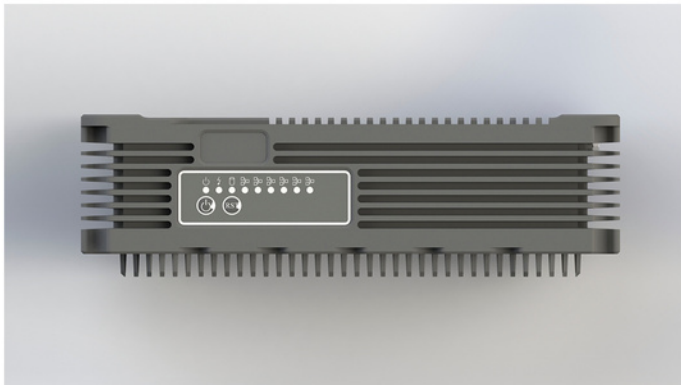
BM2460.01 personal electronic computer

APPOINTMENT:

BM2460.01 is a computer designed as a system unit with air (fanless) cooling. Designed for installation in vehicles (wheeled and caterpillar), railway transport, sea and river vessels, aircraft and helicopters. Maintains performance under the influence of precipitation, high humidity, high (low) atmospheric pressure, solar radiation, static and dynamic dust in a wide temperature range (from minus 40°C to plus 60°C).

The product is operable when exposed to sinusoidal vibration (amplitude up to 5g), single (up to 100g) and multiple (up to 15g) impacts, rocking, salt fog, mold fungi and other external factors.

The product can be placed in industrial workshops, under the influence of aggressive environments.



Republic of Belarus
 22040, Minsk
 Bogdanovicha str., 155
 +375(17)334-47-42
 orion@niienvm.by
 www.niienvm.by

/////// SPECIFICATIONS:

Calculating machine:

- processor type	i3-i7, 4-11 generations
- RAM	4-32 GB
- SSD	32 GB - 1 TB, 2(4) psc.
- video controller	integrated into the chipset
- software compatibility	Windows, Linux

Interfaces

USB – 5 channels
 Ethernet 10/100/1000 – 6 channels
 RS-232/422/485, 10 channels
 HDMI – 2(3) channels
 SVGA – 1 channel
 mic/line input
 line audio output
 discrete input/output (with galvanic isolation of each channel) – 8
 input channels, 8 output channels
 possibility to install 3 M.2 modules

Power supply

- supply voltage	16–32 V (~ 230 V via BME008 voltage converter)
- power consumption	no more than 100 W
- possibility to connect an external battery	

Weight

5 kg

Dimensions

332 × 216 × 100 mm

Operating conditions

- operating ambient temperature	– 40°C ... +60°C
- limiting ambient temperature	– 50°C ... +70°C
- interference	single – 100g, (1–5) ms; multiple – 15g, (5–10) ms
- sinusoidal vibration	(5–500) Hz, 5g
- atmospheric precipitation (intensity)	(5 ± 2) mm/min
- static dust (concentration - circulation rate)	(5 ± 2) g/m ³ – (0,5–2) m/s
- high air humidity	up to 100% at +35°C
- atmosphere pressure	60...107 kPa
- pitching and tilting	±45° (7 – 16) c long-term (no time and angle limit)
- salt fog	+