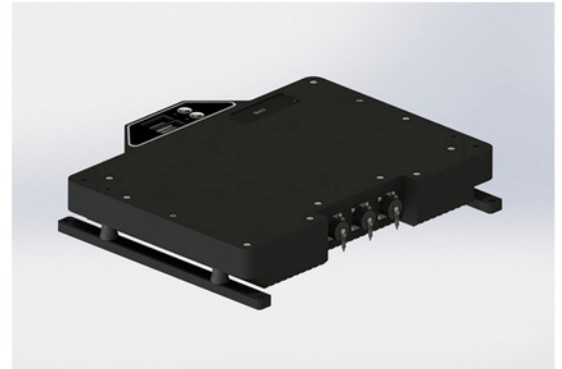
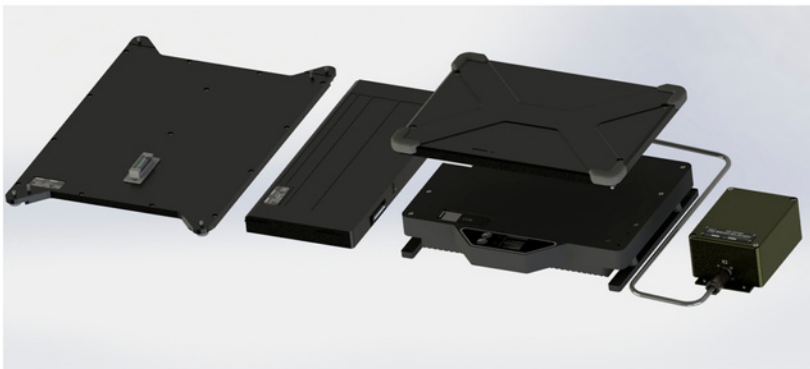
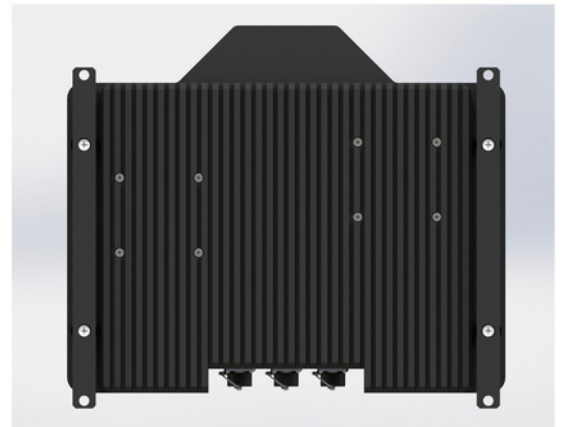
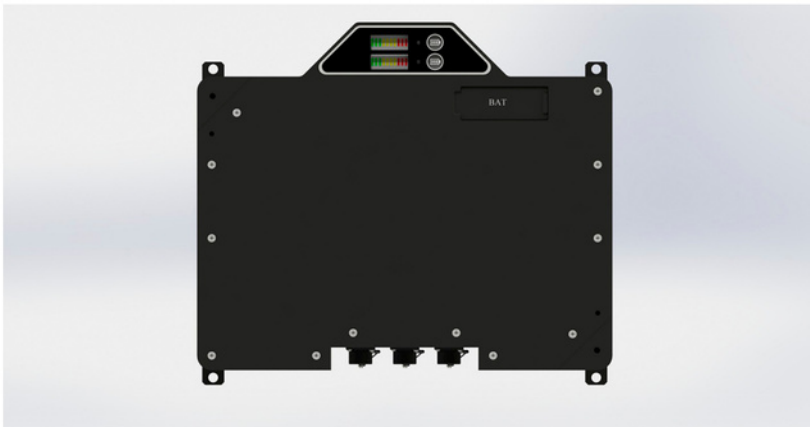


Battery charger BME564

APPOINTMENT:

The multifunctional device BME564 (hereinafter referred to as BME564) is intended for charging and restoring batteries BME101, BME102, BME103, BM2307.M1.02.A001, as well as providing consumers with a power of up to 250 W with an uninterrupted power supply of 24V.



Republic of Belarus
 220040, Minsk
 Bogdanovicha str., 155
 +375(17)334-47-42
 orion@nievm.by
 www.nievm.by

////////// **SPECIFICATIONS:**

| | |
|---------------------------------------------------------------|------------------------------------------------------------------------------------------------------------------|
| Power supply voltage | 18-36 V |
| output power | 250 W |
| Maximum number at the same time rechargeable batteries | 2 pcs. |
| Battery recovery | after a deep discharge or an emergency protection against overheating of battery cells |
| Weight | 2.6 kg |
| Dimensions | 282 × 244 × 49mm |
| Ambient operating temperature | - 40°C ... +50 °C (if the battery does not have built-in heating cells can be charged at temperatures above 0°C) |